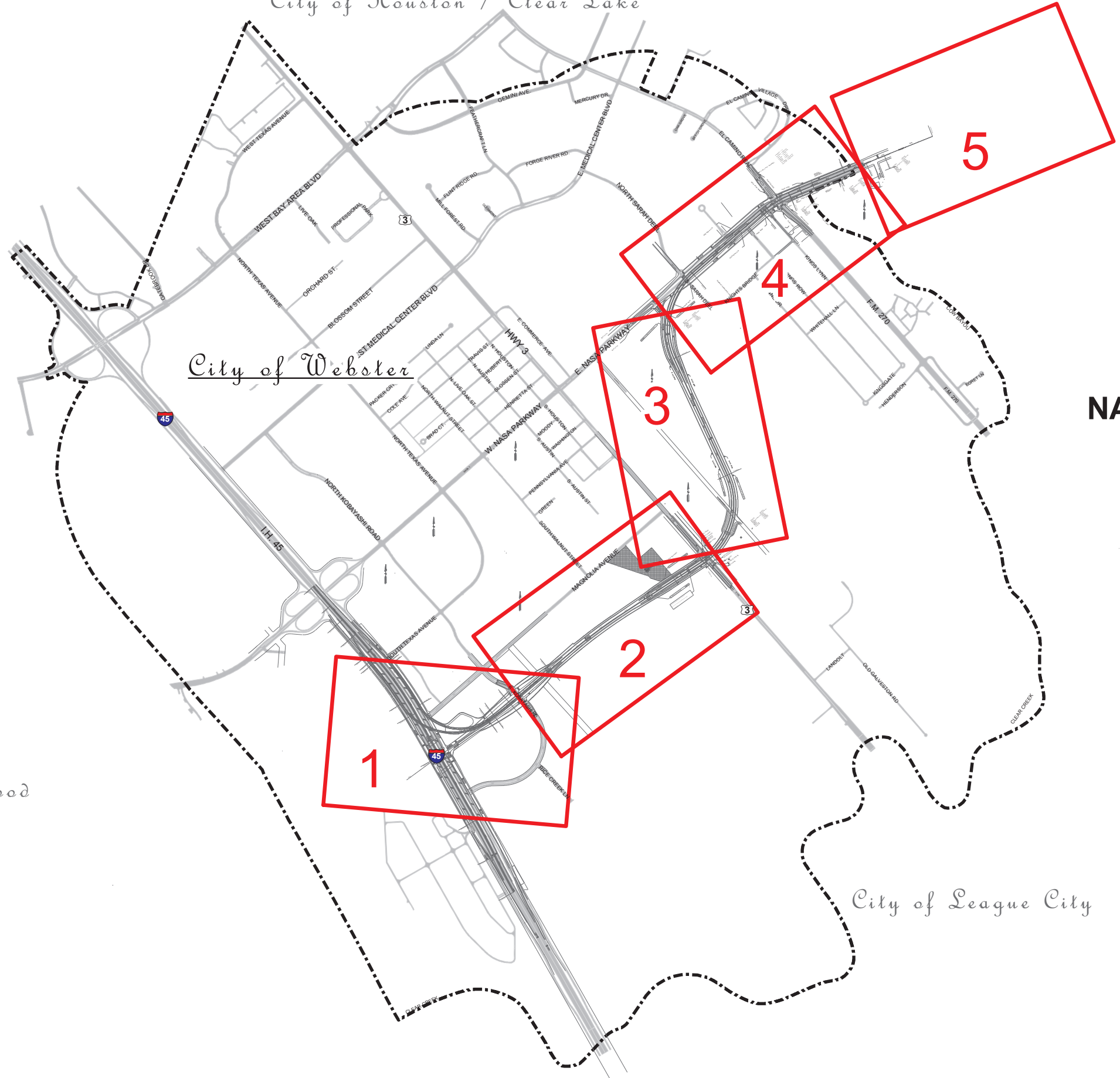


City of Houston / Clear Lake

City of Webster

City of Friendswood

City of League City



NASA PARKWAY BYPASS

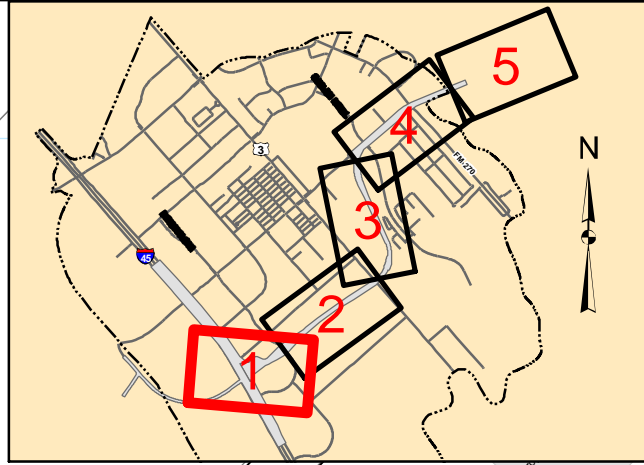
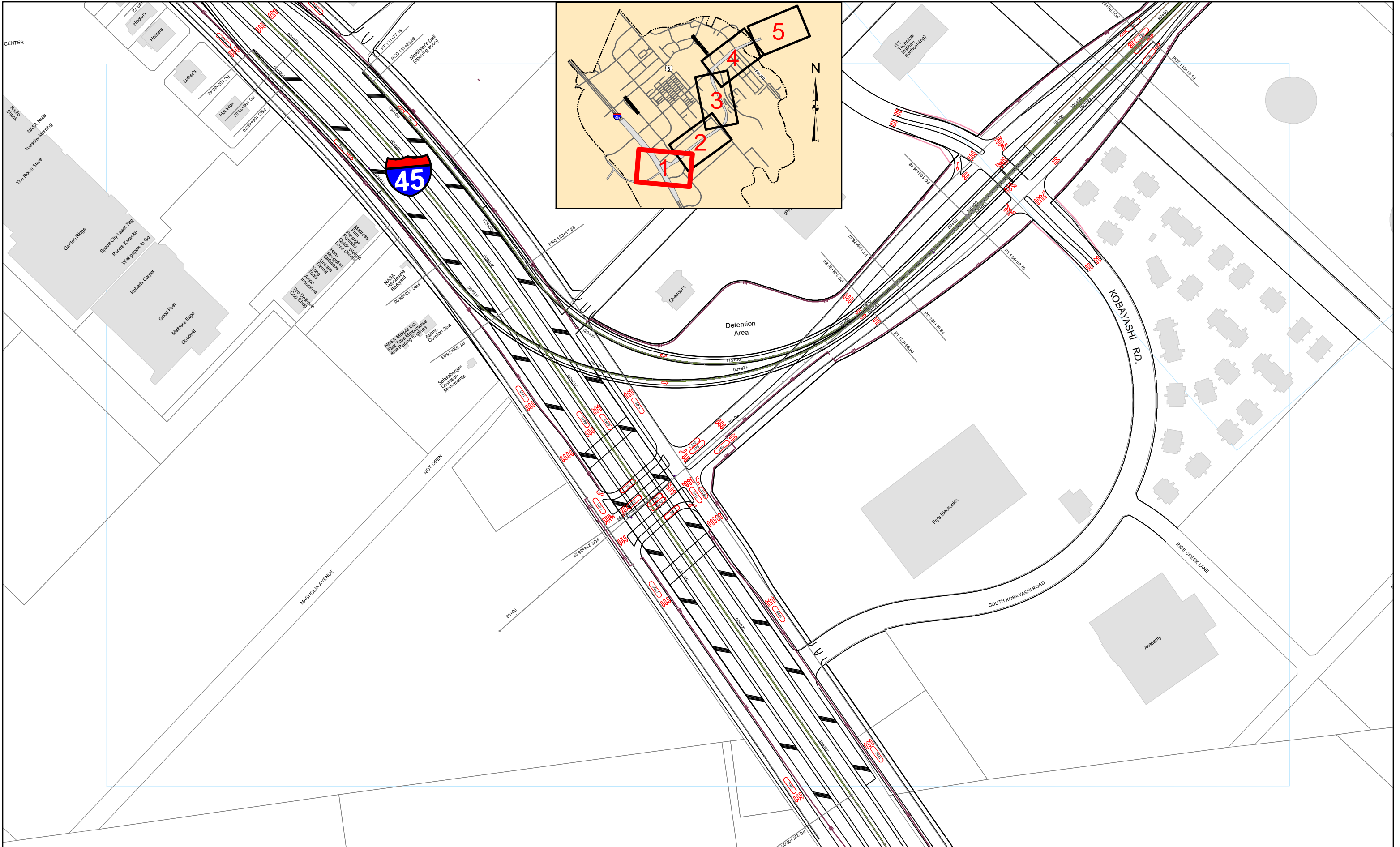
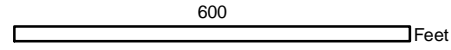


1

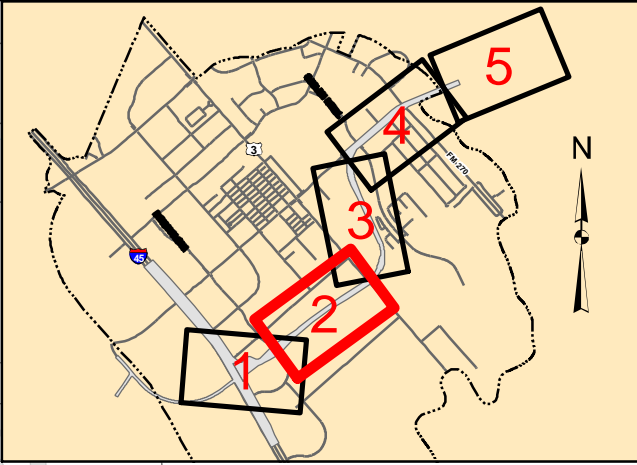
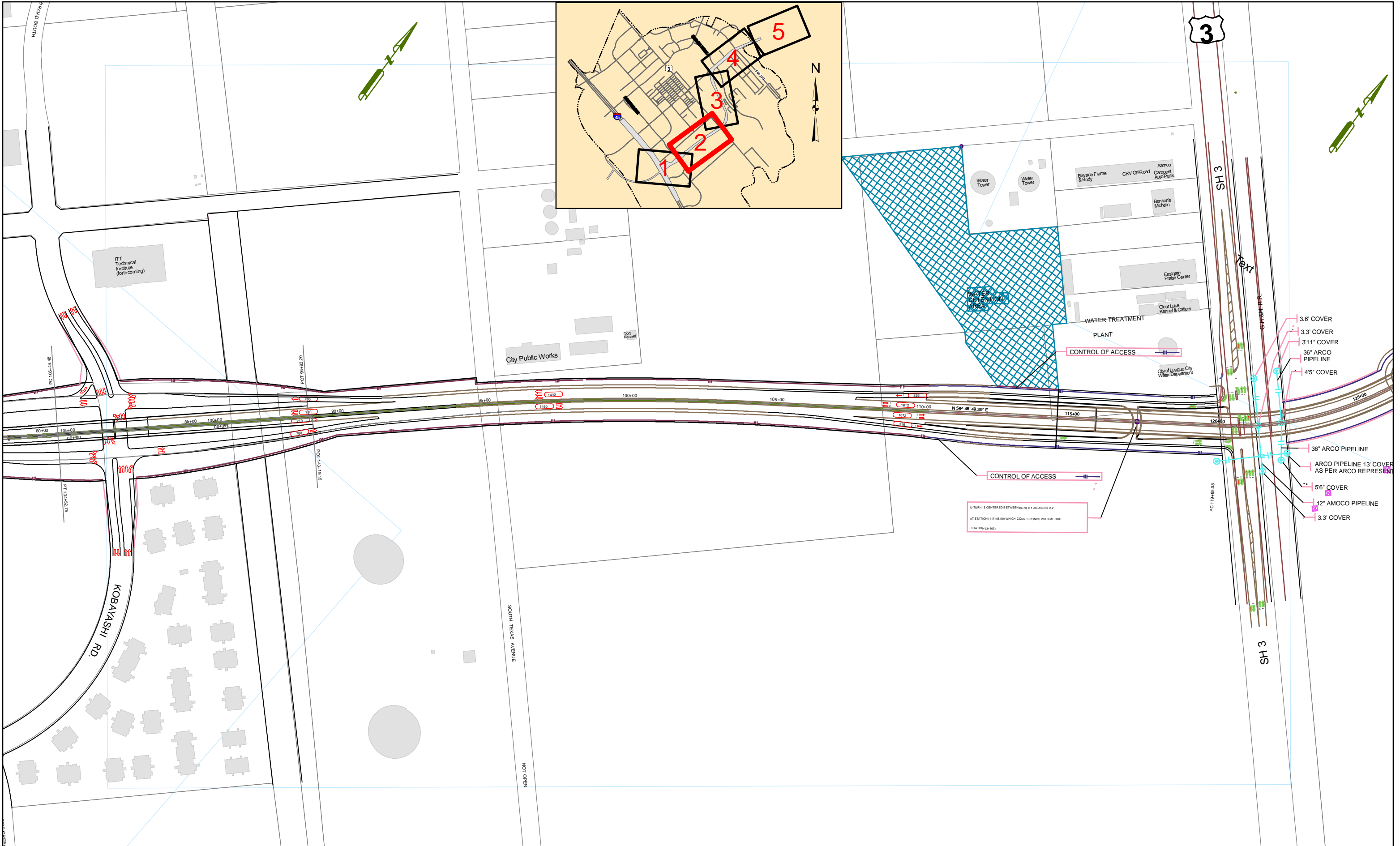
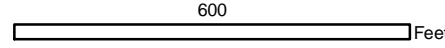
1 Miles

Prepared 07/26/2006
 GIS Div., City of Webster, TX
 File: M:\Requests\ArcInfo_maps\Bypass\StripMap Cover page1.mxd

NASA PARKWAY BYPASS



NASA PARKWAY BYPASS



- 3.6' COVER
- 3.3' COVER
- 3'11" COVER
- 36" ARCO PIPELINE
- 4'5" COVER
- 36" ARCO PIPELINE
- ARCO PIPELINE 13" COVER AS PER ARCO REPRESENTATIVE
- 56" COVER
- 12" AMOCO PIPELINE
- 3.3' COVER

CONTROL OF ACCESS

U-TURN IS CENTERED BETWEEN BENT # 1 AND BENT # 2
 AT STATION (117+08.98) WHICH CORRESPONDS WITH METRIC
 STATION (24566)

NASA PARKWAY BYPASS

